

Fuji's advance technology for ODTs

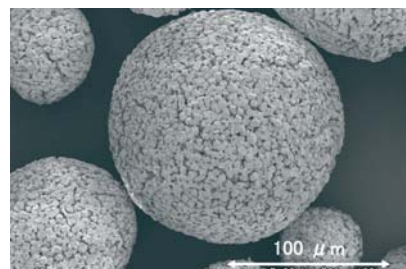
NEW

# F-MELT® F1

## Fast Melt Made Easy For Dietary Supplement ODTs



**F-MELT® F1** is a co-spray dried excipient consisting of starch, cellulose, and inorganic excipient, developed by Fuji Chemical Industry Co., Ltd. **F-MELT® F1** is an advance direct compressible excipient system for fast oral disintegrating dietary supplement tablets. ODTs and chewable tablets can be easily prepared by simple blending **F-MELT® F1** with nutraceutical active ingredients and lubricant followed by direct compression.



### Features of F-MELT® F1

- ✓ Ready to use excipient for ODTs
- ✓ Spherical particle with excellent flowability
- ✓ Fast disintegration in the oral cavity
- ✓ Suitable for direct compression
- ✓ High tablet hardness with low friability
- ✓ All food grade ingredients with pleasant mouth taste
- ✓ No royalty or license fees required
- ✓ No special equipment required for ODT manufacture

### Physical Properties

LOD [%]	5.9
Bulk Density [g/mL]	0.5
Angle of Repose [°]	31



### Formulation Examples

#### Placebo Tablet (Ø10 mm, 300 mg per tablet)



Compression Force: 700~740 kgf  
 Tablet Hardness: 41.2 N  
 Oral Disintegrating Time: 32 sec

<b>F-MELT® F1</b>	94.7%
Citric acid	2.0%
Aspartame (Sweetener)	0.9%
Lemon flavor	1.4%
Sucrose Ester S-370F	1.0%

#### Vitamin B12 Tablet (Ø10mm, 300 mg per tablet) (V.B12 500μg per tablet)



Compression Force: 385-405 kgf  
 Tablet Hardness: 59.8 N  
 Oral Disintegrating Time: 30 sec

Vitamin B 12	0.17%
<b>F-MELT® F1</b>	96.33%
Talc	0.7%
Strawberry Fragrance	2.0%
Aspartame (Sweetener)	0.3%
Sucrose Ester S-370F	0.5%

